

**Head of Institute**  
President and Vice President

**ZEPAI**  
Center for Pandemic Vaccines and Therapeutics

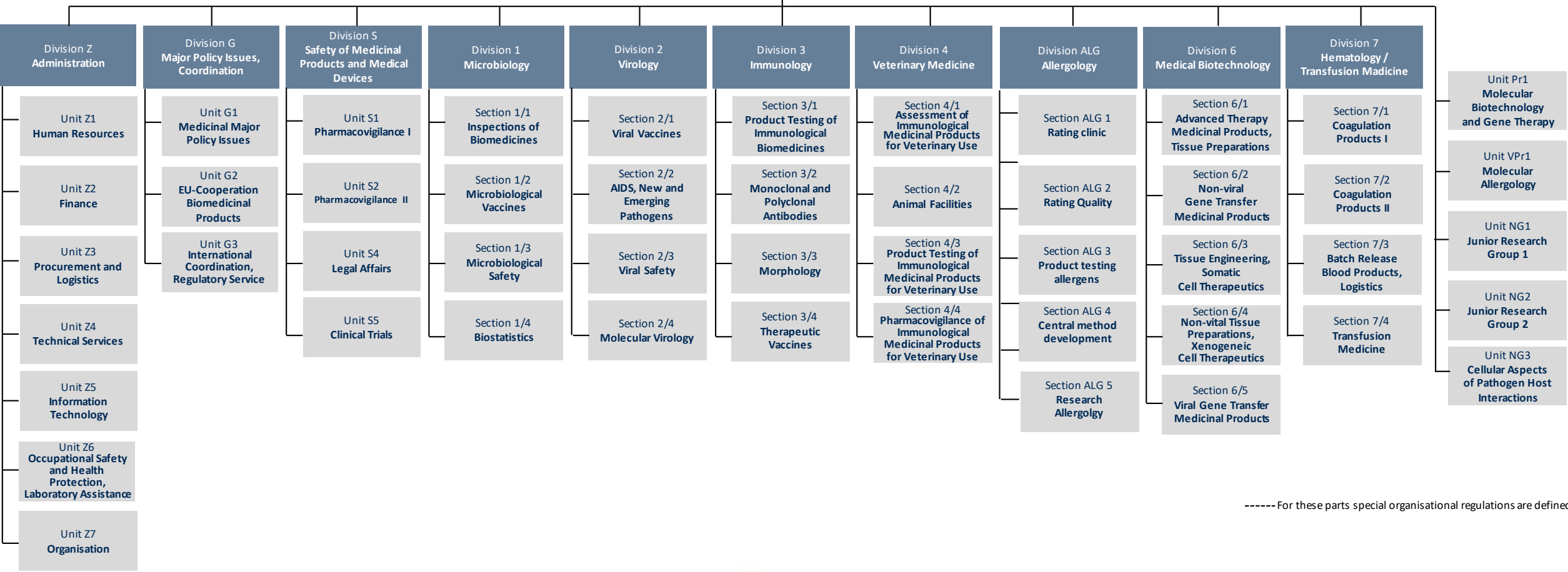
**PEI IVD**  
Testing Laboratory for IVD

**LOEWE-DRUID**  
LOEWE-Professorship for Neglected Infectious Diseases with Focus on Imaging

**Unit 3**  
Press and Information Office

**Unit 2**  
Controlling, Quality Management

**Unit L1**  
Management Support, Language Services



----- For these parts special organisational regulations are defined.

