

Pre-S/S sequences of the Samples 4 and phylogenetic tree constructed in comparison of HBV strains (retrieved from GenBank) reflecting the respective genotype B

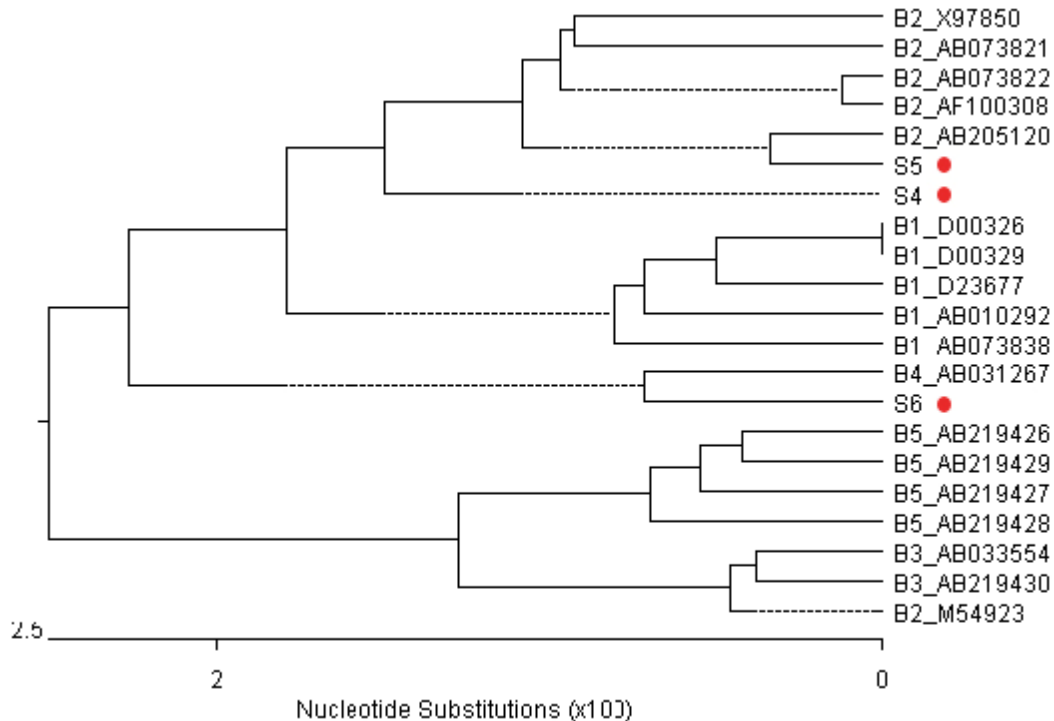
Sample 4 was originally sub-genotyped as B1 based on the S target. Additionally sequencing based on the pre-S/S target revealed a sub-genotype B2, but closed to B1 sequences.

Sample 4
^^

```

ATGGGAGGTTGGTCTTCCAAaCCTCGAAAaGGCATGGGGACAAATCTTTCTGTCCCAATCCTCTGGGATTCTTC
CCCGATCATCAGTTGGATCCTGTATTCAAAGCCAACCTCAGAAAATCCAGATTGGGACCTCAACCCGCACAAGGAC
AACTGGCCGGACGCCAACAAGGTGGGAGTGGGAGCATTTCGGGTCAGGGTTCACCCCTCCCCATGGGGGACTGTTG
GGGTGGAGCCCTCAAGCTCAGGGCATACTCACAACCTGTGCCAGCAGCTCCTCCTCCTGCCTCCACCAATCGGCAG
TCAGGGAGGCAGCCTACTCCCTTATCTCCACCTCTAAGGGACACTCATCCTCAGGCCATGCAGTGGAACTCCACC
ACTTTCCACCAAACCTCTGCAAGATCCCAGAGTCAGGGCCCTGTACTTTCTGCTGGTGGCTCCAGTTCAGGAACA
GTGAGCCCTGCTCAGAATACTGTCTCTGCCATATCGTCAATCTTATCGAAGACTGGGGACCCCTGTACCGAACATG
GAGAACATCGCATCAGGACTCCTAGGACCCCTGCTCGTGTTACAGGCGGGGTTTTTCTTGTGACAAAAATCCTC
ACAATAACACAGAGTCTAGACTCGTGGTGGACTTCTCTCAATTTTCTAGGGGGAACACCCGTGTGTCTTGCCAA
AATTCGCAGTCCCAAATCTCCAGTCACCTACCAACCTGTTGTCTCCAATTTGTCTGGTTATCGCTGGATGTGT
CTGCGGCGTTTTTATCATCTTCTCTGCATCCTGCTGCTATGCCTCATCTTCTTGTGGTCTCTTGACTATCAA
GGTATGTTGCCCGTTTGTCTCTAATTCCAGGATCATCAACTACCAGCAGGGACCATGCAAAAACCTGCACAAC
CCTGCTCAAGGAACCTCTATGTTTCCCTCATGTTGCTGTACAAAACCTACGGACGGAAACTGCACCTGTATTCCC
ATCCCATCATCTTGGGCTTTTCGAAAATACCTATGGGAGTGGGCCTCAGTCCGTTTCTCTTGGCTCAGTTTACTA
GTGCCATTTGTTTCAGTGGTTCGTAGGGCTTTCCCCACTGTCTGGCTTTCAGTTATATGGATGATGTGGTATTGG
GGGCAAGTCTGTACAACATCTTGAGTCCCTTTATGCCGCTGTTACCCATTTTCTTTTGTCTTTGGGTATACATT
TAA
    
```

Phylogenetic relationship of genotype B HBV isolates



S4 = Sample 4